

Melton Primary School Newsletter

P: 9743 5335

E: melton.ps@education.vic.gov.au

W: <http://www.meltonps.vic.edu.au>

Monday 16th October, 2023



Students are invited to wear one of their favourite hats in the classroom on this day to celebrate our amazing staff!



THANK YOU

From the Principal's desk

Dear Parents/Guardians,

Planning for 2024

Planning for 2024 has now commenced. Apart from students in Grade 6, **if you know that your child/ren are not likely to be at Melton Primary in 2024**, can you **please notify the office** so that we do not count them in our enrolment numbers and classes. If you have a Foundation student for 2024, please ensure that you enrol them now so that we can guarantee a position for them. Shortly our staff will be asked to commence the process of determining student classes for 2024. This is a long process where many things are taken into consideration - academic ability, student behaviour, students with additional needs, friendship groups and wellbeing. If you have any special considerations, other than those listed above, you can put them in writing addressed to the **Principal and delivered to the office by Friday 27th October**. Your considerations will be viewed and examined, but there is no guarantee that your request will be approved. A great deal of time is spent ensuring that grades are created equally and fairly by and for all staff. It is therefore school policy that once grades have been formed, that lists are not altered without the approval of a Principal Class member of staff.

Reading Goal for Term 4

Our nightly reading goal is **35 nights**, remember reading on weekends count! Keep track in your reader diary or diary.

2024 Book Boxes

School Council is covering the cost of all books and stationery that students will require in 2024. Please ensure that you take time to thank anyone that you know on School Council.

Families are asked to ensure that they provide for their child/ren a school bag, drink bottle, pencil case, library bag and art smock for 2024. If families who wish to donate a box of tissues to the school, it would be greatly appreciated.

School Concert

Save the date as the School Concert is on 18th December from 4:30pm. Teachers will be sending home requirements for costumes etc. so please ensure that you look out for these posts on Dojo.

From the Principal's desk

World Teachers' Day - Hats Off to Teachers

On the 27th of October, we will be celebrating World Teachers' Day and the theme is Hats Off to Teachers. **We encourage our students to wear one of their favourite hats in class on this day!** School hats that are sunsmart still need to be worn during break times. On this day, I encourage all of our families to take some time to thank our teachers for their support, encouragement, guidance, passion and commitment to making Melton Primary the best school.

Public Holidays and Curriculum Days

Please mark in your diaries that there is no school on the following days this term:

Monday 6th November (curriculum day), **Tuesday 7th November** (public holiday), **Wednesday 22nd November** (teacher professional practice day) and **Wednesday 20th December** (curriculum day).

Regional Athletics

Congratulations to our students who represented the Melton District at the Regional Athletics Day. We are super proud of your achievements and for being sensational ambassadors for our school! We are so excited as we now have some students competing at the State Athletics competition. Good luck to those students who will now go on and compete at a state level! #meltonpsproud

Students at school prior to 8:15am

A friendly reminder to parents/careers that students who are at school prior to 8:15am should be placed in before school care or they should be supervised by parents in the yard. Unfortunately we have had an increased number of students at school prior to 8:15am who are unsupervised. Staff are required to start work at 8:18am and the teachers are on yard duty from 8:30am.

Vanessa Harrison
Principal

Key Dates for Term 4, 2023

October

- 16th Teeth on Wheels visit
- 16th Grade 4 & 5 Cyber Safety Incursion
- 17th Regional Athletics - selected students
- 18th $\frac{5}{8}$ Rugby League - selected students
- 18th Uniting Kindergarten Visit
- 19th Teeth on Wheels visit
- 25th $\frac{3}{4}$ Rugby - selected students
- 27th World Teacher's Day
- 27th Melton Minis 2:05pm
- 30th - 3rd November - Book Fair
- 30th Grade 2 Werribee Zoo Excursion



November

- 6th Curriculum Day **Students not required at school**
- 7th Melbourne Cup Holiday - No School
- 8th Teeth on Wheels
- 9th Uniting Kinder Visit
- 10th 2024 Foundation Orientation
- 10th Melton Minis 2:05pm
- 11th Remembrance Day
- 13th Grade 5 Health and Human Relations Incursion
- 15th Teeth on Wheels
- 20th Grade 5 Health and Human Relations Incursion
- 22nd Teacher Professional Practice Day **Students not required at school**
- 24th Grade $\frac{5}{8}$ Maths Games Day
- 24th Melton Minis 2:05pm
- 27th Grade 5 Health and Human Relations Incursion
- 28th - 29th Grade 3 Camp
- 29th Teeth on Wheels

Sensational Attendance

ATTENDANCE

LAST FORTNIGHT

CONGRATULATIONS

TO THE FOLLOWING GRADES

0D 4A 4D

IF YOUR CHILD IS GOING TO BE AWAY
enter an absence on Compass or
phone 9753 5335 and select 1 to leave a message

**WHEN DO ABSENCES
BECOME AN ISSUE?**


SATISFACTORY
9 or fewer days

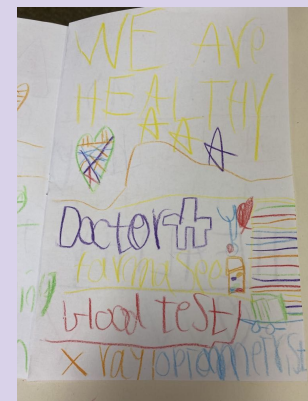
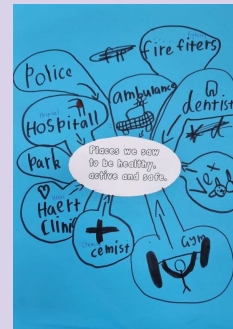
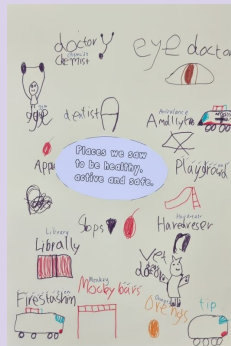
WARNING SIGNS
10 to 17 days

CHRONIC ABSENCE
18 or more days




Grade 1

On Friday the 13th of October, the grade 1 students had a community walk to see places that help us be active, safe and healthy.



Reminders

Please see Compass to give permission for our Grade 1 party!
We're so excited!!

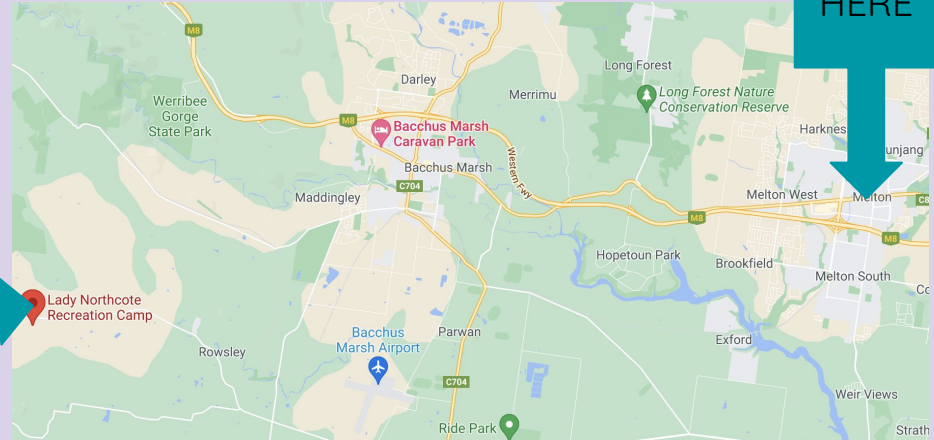
Stay tuned for any updates regarding our concert items and clothing.



Grade 3 Camp November 28th and 29th

A great opportunity for the grade 3's to spend some time together socialising and participating in some fun activities. Students will also learn what it is like to spend a night away from home, all while being only a short 30 minute drive away.

CAMP IS
HERE



WE
ARE
HERE

Spending time outside encourages adventure, good health, personal growth and community spirit. It challenges young people physically and mentally, allowing them to unplug, take in nature and the fresh air.

The campsite has a range of adventure-based activities, including specialised activities only instructed by qualified YMCA camp leaders (such as canoeing, the flying fox and the giant swing) and non-specialised camp activities that can be led by teachers (such as group dynamics and orienteering).

Permission and payment is due by Monday the 20th of November to secure a spot.
No late payments will be accepted.

Performing Arts Dance!

OUR DANCE ROUTINE

WARM UP- STRETCHING AND
WARMING UP OUR BODIES TO
BE READY TO DANCE

CHOREOGRAPHY- LEARNING
THE DANCE MOVES AND
SPACING

COOL DOWN- COOLING OUR
BODIES DOWN WITH
STRETCHING AND BREATHING



Performing Arts Dance!





AGREED BEHAVIOUR SUPERHEROES

Showcasing our wonderful Foundation students ...



What an incredible and supportive friend Sebastien is. He has been helping his friends practise their M100W in class!




Hazel is always demonstrating kindness, respect, politeness, caring and inclusion every day in her classroom. How amazing is that?!



Eden is a superstar! She is always safe and keeps her peers in mind when sharing equipment. She follows instructions and always listens!



Well done to Zayn! He is always showing that he is an active learner by being a superstar at listening and always giving things his best go!



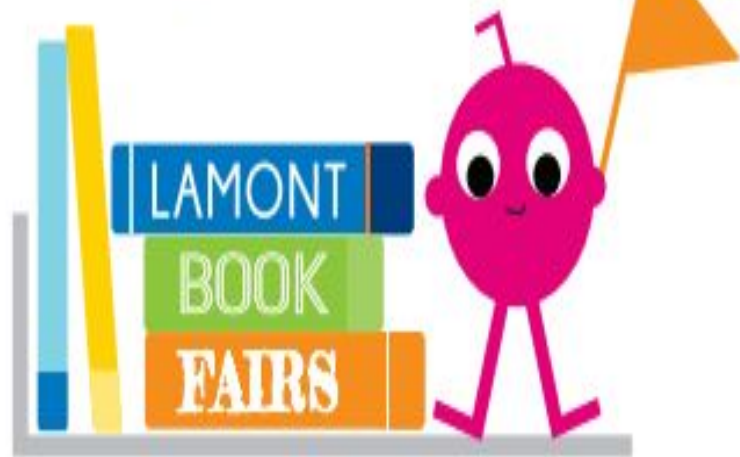
A yellow, round character with large eyes is flying a blue paper airplane. Dotted lines show its path across the green background.

LAMONT BOOK FAIR

Coming soon,
don't miss it!

BOOKS FOR EVERYONE

Every purchase supports our school!



www.lamontbooks.com.au



FRIDAY 17 NOVEMBER

The SRC invite you to join our free dress day for a gold coin donation!

We are raising money for a Gaga Pit for our school.

Please no open toe shoes or spaghetti/singlet straps.



Drop off and pick up area

Just a reminder when dropping off and picking up students from the drop off zone that student are utilising the zebra crossing, please do not park across this while waiting in the drop off and pick up line.



Key contacts should your family need support

Lifeline (Crisis Support) 13 11 14

Beyond Blue (Counselling and Support) 1300 22 4636

Kids Helpline (Support for children and young people aged 5-25) 1800 55 1800

Child and Family Services (Connecting families to resources and support) 5337 3333

The Orange Door (Support for Family Violence) [Visit https://orangedoor.vic.gov.au](https://orangedoor.vic.gov.au)

Safe Steps (Support for women and children who are victims of family violence) 1800 015 188

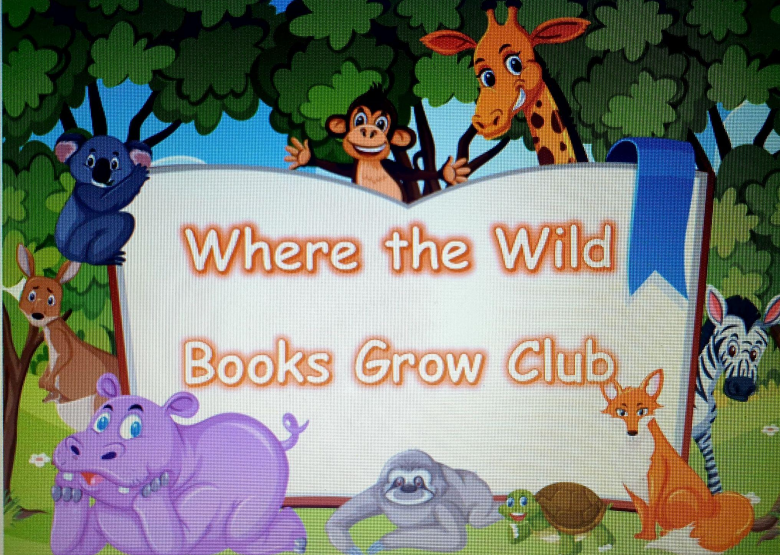
MensLine Australia (Counselling service for men with family and/or relationship issues) 1300 78 99 78

Child Protection (For children and young people whose safety is at risk) 13 12 78

13Yarn (for Aboriginal and Torres Strait Islanders) 139276

Yarning Safe and Strong (for Aboriginal and Torres Strait Islanders) 1800 959 563

Brother to Brother (for Aboriginal and Torres Strait Islanders Men only) 1800 435 799



The Foundation students are really enjoying reading with the Grade 6 students in the Library. This club is for students who don't read at home or would like extra reading at school. If you would like your child to attend, please notify their teacher.



**Melton
Minis**

Room 7

story
time

activities

2:00pm

**All younger
siblings invited**



Term 4 dates:

Friday 27th October

Friday 10th of
November

Friday 24th
November

Friday 8th of
December



Foundation 2024 orientation session

**We look forward to the students
participating in their next
orientation session on:**

**Friday 10th of November
Group B- 9:00-10:00
Group A- 10:20-11:20**

If you haven't enrolled yet, it's not too late



WISHING TREE

Melton Primary School 2023

We are once again looking for donations of gifts for our wishing tree. Gifts can be dropped off at the office up until 1st December.

Please ensure gifts are unwrapped and placed in a bag with your family name on it. We will wrap the gift and put a sticker on it.



Christmas Dress Up Day

Wednesday 15th

December

*We will also be holding our
live assembly at 8:50am,
everyone is welcome to attend.*



It's Competition time...

MPS Concert DVD Cover



Get your design skills ready. We are looking for a DVD Design for the 2023 MPS School Concert. Your design must include: the year: 2023 and the heading: Melton Primary School



Make sure your entries are handed in to the office by:

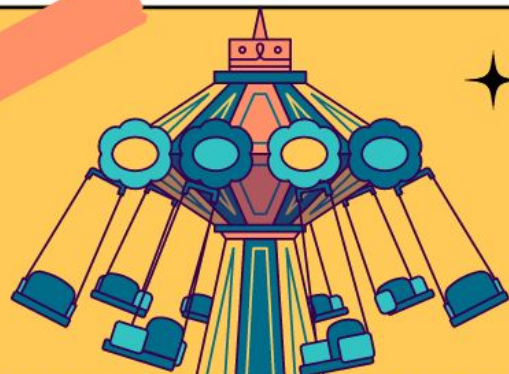
**Friday 1st
December 2023**

Please make the design A4 size.

ROYAL

MELTON SHOW

GUEST STAR YOU!



GAMES
SHOWBAGS
SLUSHIES
ANIMALS
MUSIC
TATTOOS
PRIZES

ARE YOU READY TO HAVE SOME
FUN?!

FRIDAY 15
DECEMBER 2023

80%
ATTENDANCE

GET TICKET

MELTON PRIMARY SCHOOL



**MONDAY
DECEMBER 18
4.30PM**

**GATES OPEN 4.15PM
CONCERT ON THE OVAL
END TIME: 6PM**

**FOOD TRUCKS AVAILABLE
BYO PICNIC RUGS/CAMP CHAIRS**



MELTON PRIMARY SCHOOL 2023 SCHOOL CONCERT ORDER FORM

The MPS Annual School Concert will be held on Monday the 18th of December at 4.30pm out on the school oval. Encore Videography will be taping our concert again.

These will be available for collection at the beginning of Term One 2024.
Please return your order form and payment to the office by Monday the 4th of December.

No late orders will be accepted.

NAME OF ELDEST STUDENT: _____

GRADE: _____

Please choose if you'd like to order a DVD or USB

DVD

\$15 EACH

☐

of DVD's

USB

\$22 EACH

☐

of USB's



Orders via
Compass
this year!

Please enter through either the Church Street oval entrance or through the gates between the pool and STEM room via Raleighs Road.

No tickets required. See you there!